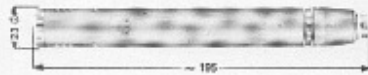


AKG D224

Dimensions (mm.):

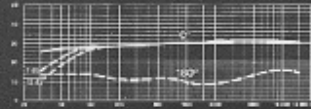


D224

Built in windshield

Separate compensating windings against stray magnetic field interference on both systems

FREQUENCY RESPONSE CURVE:



Automatic cross-over network for bass and treble capsules

Entry slots for DIN and Cannon

Objective sound transmission through two optimal sized dynamic systems

High frequency system (800—20 000 Hz)

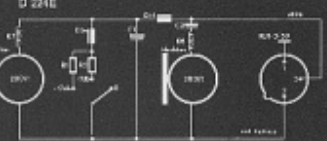
POLAR DIAGRAM:



Low frequency system (20—800 Hz) with 23 mm. diameter capsule

Acoustical resistance tube for low frequency capsule

Three position bass-cut switch to reduce rumble and handling noise (0, -7, -12 db at 50 Hz)



Direct receiver in two way system — separate frequency circuit
20 000 Hz
120 dB (±76 dbv)
Impedance ± 10%
R: 200 ohms
Cardioid
Switch (Filter CCITT-C/DIN 45 405)
Switch

max. output pressure level
128 dB (128 db SPL)
Diaphragm: MAKROFOL

When ordering please note:

D 224C: with built-in 3-conductor DIN-plug T 3282
D 224E: with built-in 3-conductor Cannon-plug XLR-3-10

Weight:

D 224: 200 grams net
With individual packing: approx. 250 grams

Accessories:

(How to order please refer to the price-list)

Windscreens: W 2, W 2A

Boom attachment: H 8

Stand adapter: SA 15/3

Table stands: St 1, St 4, St 12, St 305

Floor stands: St 12, St 30, St 102A, St 200

Mating connector: D 224C: 3-conductor DIN-connector

D 224E: 3-conductor Cannon-connector XLR-3-11C

Microphone cables: D 224C: MK 1.5, 1/10

D 224E: MK 4/5

Type: Dynamic

Roll off: 0, -7, -12 @ 50 Hz

Polar Patterns: Cardioid

Phantom Power: No

Max SPL: 128 dB

Applications: Snare, Acoustic Guitar, Strings

Frequency Range: 20 Hz - 20 kHz

PAD: No