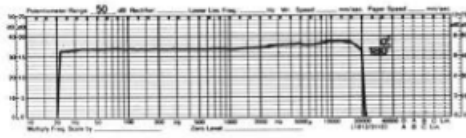


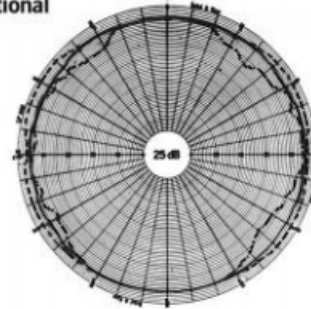
PML DC63 (2)




Typical frequency response curve Omni-directional

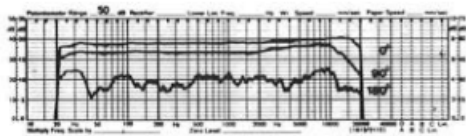


Hz
100-1000 ———
2000-8000 - - - -
12000 - - - - -

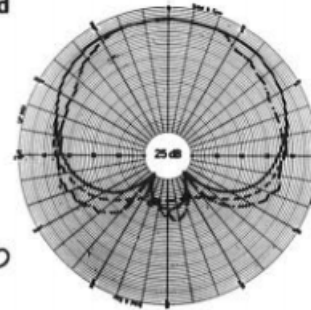


Potentiometer 1
Upper ring switch 
Lower ring switch —


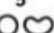
Typical frequency response curve Cardioid



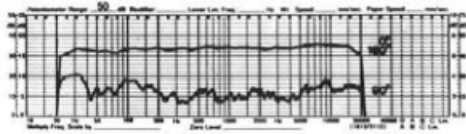
Hz
100-1000 ———
2000-8000 - - - -
12000 - - - - -



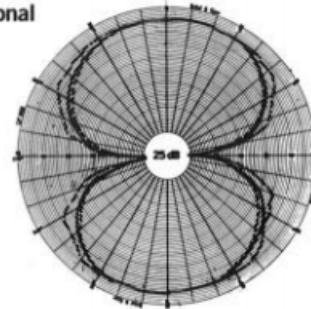
Cardioid A
Potentiometer 0
Upper ring switch —
Lower ring switch —


Cardioid B
Potentiometer 1 5
Upper ring switch  8 
Lower ring switch — —

Typical frequency response curve Bi-directional



Hz
100-1000 ———
2000-8000 - - - -
12000 - - - - -



Potentiometer 5
Upper ring switch 
Lower ring switch —

Type: Condenser

Roll off: No

Polar Patterns: Cardioid, Omni, Bi-directional

Phantom Power: Yes

Max SPL: 146 dB w/ PAD

Applications: Vocals, Strings

Frequency Range: 20 - 20k Hz

PAD: 12 dB